

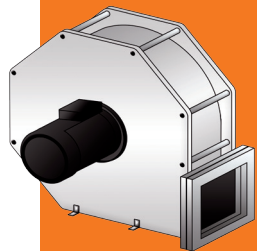
Ventilation Solution for corrosive, harmful & odorous environments Laboratory and Composting Centrifugal Fan VCPL - VCPL HP

The VCPL and VCPL HP fan range is designed for low and medium airflows. These fans are particularly suitable for laboratory or composting applications as well as adsorption on Activated Carbon.

The specific shape of the VCPL casing (heavy PPH) without frame, allows its self-supporting and its orientation by simply replacing the brackets. The circular inlet and the rectangular outlet flange allow the adaptation of flexible transformations proposed in option.

The casing is bolted/mounted. The impeller (open blades) is cut from a single piece of polypropylene for mechanical and chemical resistance by CNC machine.

Download for free our "Europ-Plast Fan Selector" software to achieve a short-list of the best suitable fans adapted to your requirements:
www.europe-environnement.com



CHARACTERISTICS:

VCPL: Laboratory application

- Airflows from 50 to 6 000 m³/h
- Static pressure up to 1 500 Pa
- Standard casing and impeller: PPH
- Inlet circular sleeve in PVC (in option)
- Stainless steel mounting brackets
- Possibility of setting the fan directly on the roof
- Direct Drive (ED)

VCPL HP: Composting application

- Airflows from 400 to 3 000 m³/h
- Static pressure up to 3 500 Pa
- Standard casing and impeller: PPH
- Direct Drive (ED)

For any other characteristics, contact us:
europe.environnement@cmigroupe.com



John Cockerill Europe Environnement

1 rue des Pins - Parc d'Activités du Pays de Thann
68700 Aspach-Michelbach, France
Tél. +33 (0)3 89 37 41 41
europe.environnement@johncockerill.com

johncockerill.com/environment

CE TÜV



John
Cockerill