

Wafer Check Valve Type 369



General

- **Size:** 1½"–12"
- **Material:** PVC, PP, PVDF
- **Seals:** EPDM, FPM
- **Mounting:** Suitable for vertical and horizontal mounting
- **Connection:** Both ANSI 150 and DIN 2501

Optional Features

- **Spring:** 316 SS or Hastelloy C
- **Cleaned:** Silicone free
- **Size:** 14"–24" available upon request
- **Seals:** Alternative materials available upon request

Important Note

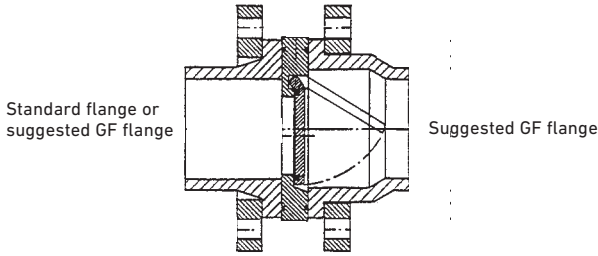
This is not a full port valve. Opening angle is between 70-90%.

Sample Specification

The Type 369 Check Valve shall be of wafer style, compatible with both flat and serrated flange adapters and suitable for both vertical and horizontal mounting. The face seal shall be a Q-ring and the port seal shall be an O-ring. The body shall be machined and the disk shall be molded. The alignment eye bolt shall be 304 stainless steel. All valves shall be tested in accordance to ISO9393 and designed to ISO16137 standards. All valves shall be manufactured under ISO9001 for Quality and ISO14001 for Environmental Management.

Technical Data

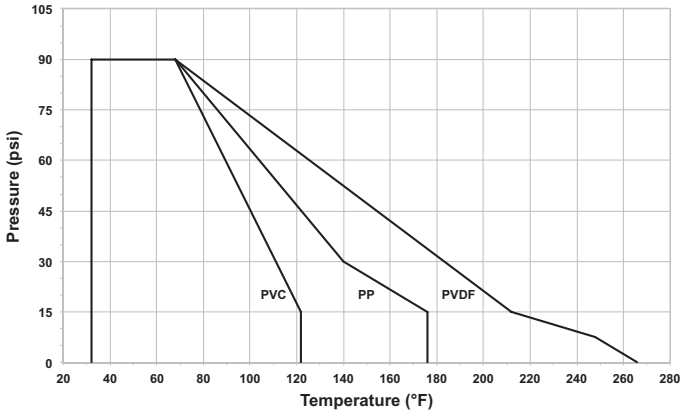
Flange Assembly



Important Installation Instructions

- A stabilizing zone of at least 5 times nominal diameter should be provided before and after the wafer check valve
- For sizes 3" and below use the next larger flange size (i.e. 2" valves require a 2½" flange)
- Direct installation on pump flange or bend not recommended
- Wafer check valves without a spring are not recommended for pulsating flows

Pressure/Temperature diagram



Cv Value

| Size (inch) | Cv (gal/min) | | |
|-------------|--------------|--------|--------|
| | PVC | PP | PVDF |
| 1½ | 25.9 | 23.8 | 23.8 |
| 2 | 63.0 | 42.7 | 42.7 |
| 2½ | 79.8 | 86.1 | 86.1 |
| 3 | 130.9 | 182.7 | 182.7 |
| 4 | 200.9 | 275.1 | 275.1 |
| 5 | 399.0 | 498.4 | 498.4 |
| 6 | 483.0 | 642.6 | 642.6 |
| 8 | 1316.0 | 1232.0 | 1232.0 |
| 10 | 1750.0 | 1708.0 | 1708.0 |
| 12 | 1932.0 | 2233.0 | 2233.0 |

Cracking Pressure (psi)

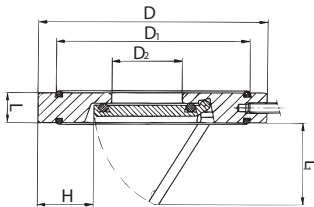
| Size (inch) | d (mm) | Vertical | | Horiz. | |
|-------------|--------|------------|-----------|------------|-----------|
| | | w/o spring | w/ spring | w/o spring | w/ spring |
| 1½ | 50 | 0.15 | 0.44 | 0.01 | 0.29 |
| 2 | 63 | 0.15 | 0.44 | 0.01 | 0.29 |
| 2½ | 75 | 0.15 | 0.44 | 0.01 | 0.29 |
| 3 | 90 | 0.15 | 0.44 | 0.01 | 0.29 |
| 4 | 110 | 0.15 | 0.44 | 0.01 | 0.29 |
| 6 | 160 | 0.15 | 0.44 | 0.01 | 0.29 |
| 8 | 225 | 0.26 | 0.55 | 0.01 | 0.29 |
| 10 | 280 | 0.26 | 0.55 | 0.01 | 0.29 |
| 12 | 315 | 0.26 | 0.55 | 0.01 | 0.29 |

Sealing Pressure (psi)

| PVC | | PP/PVDF | |
|-----|-----|---------|-----|
| 2.8 | 4.3 | 2.8 | 4.3 |
| 2.8 | 4.3 | 2.8 | 4.3 |
| 2.8 | 4.3 | 2.8 | 4.3 |
| 2.8 | 4.3 | 2.8 | 4.3 |
| 2.8 | 4.3 | 2.8 | 4.3 |
| 2.8 | 4.3 | 2.8 | 4.3 |
| 2.8 | 4.3 | 2.8 | 4.3 |
| 2.8 | 4.3 | 2.8 | 4.3 |
| 2.8 | 4.3 | 2.8 | 4.3 |

Dimensions

The following tables are shown in millimeters unless otherwise specified



| Size (inch) | d (mm) | D | D1 | D2 | L | L1 | H |
|-------------|--------|-----|-----|-----|----|-----|----|
| 1½ | 50 | 95 | 72 | 22 | 16 | 27 | 28 |
| 2 | 63 | 109 | 86 | 32 | 18 | 40 | 29 |
| 2½ | 75 | 129 | 105 | 40 | 20 | 55 | 31 |
| 3 | 90 | 144 | 119 | 54 | 20 | 67 | 32 |
| 4 | 110 | 164 | 146 | 70 | 23 | 67 | 31 |
| 6 | 160 | 220 | 197 | 105 | 26 | 100 | 41 |
| 8 | 225 | 275 | 255 | 154 | 35 | 152 | 38 |
| 10 | 280 | 330 | 312 | 192 | 40 | 180 | 41 |
| 12 | 315 | 380 | 363 | 227 | 45 | 215 | 41 |