

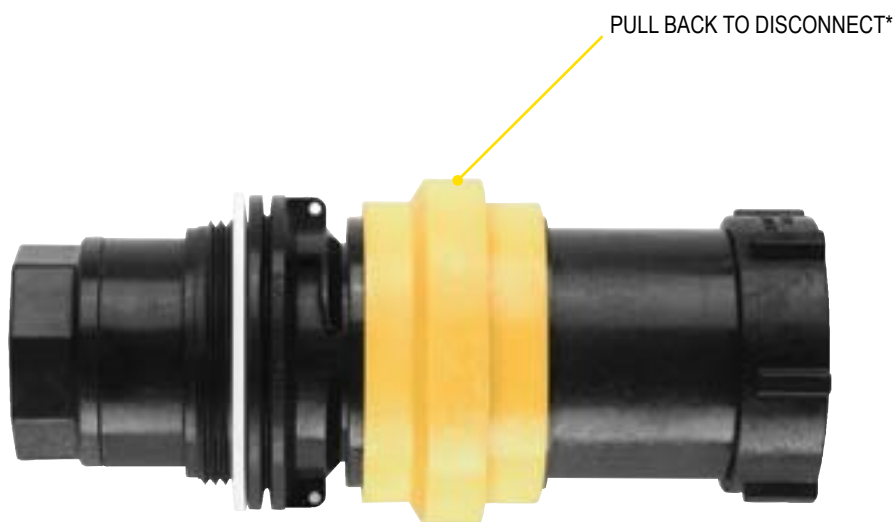
DRY POPPET COUPLINGS

FEATURES

- Lightweight
- Minimal fluid spillage
- Easy to use
- Economical
- Reduces risk of exposure
- Wide range of chemical resistance
- Maximum operating temperature 150° F
- 30 GPM maximum flow
- Precision molded in polypropylene
- 1" female NPT threads

APPLICATIONS

- Agriculture
- Industrial
- Pharmaceutical
- Chemical processing



DRY POPPET COUPLINGS

PART NO	DESCRIPTION	MAX PSI	QTY
DPCF100	FEMALE DRY POPPET COUPLER, 1" FEMALE NPT THREADS W/ FKM SEALS	100	1
DPCM100	MALE DRY POPPET ADAPTER, 1" FEMALE NPT THREADS W/ FKM SEALS	150	1
DPCMT100	MALE DRY POPPET ADAPTER, W/2" MALE THREADED BODY 1" FEMALE NPT THREADS W/ FKM SEALS	150	1

***Note:** Male adapter and female coupler shown coupled together but sold separately.

DRY-MATES

1½" POLY DRY-MATES

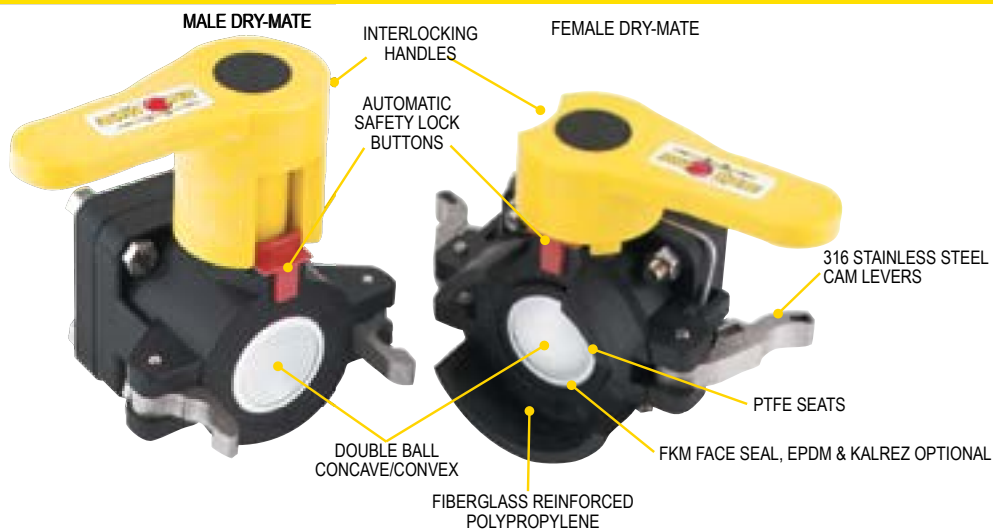
FEATURES

- Lightweight
- Easy to use
- Economical
- Reduces risk of exposure
- Wide range of chemical resistance
- Unrestricted 1½" flow
- Patented double ball design with cam lever connection
- When properly installed and operated, the assembly will not accidentally separate while fluid is flowing; preventing costly mishaps
- Spillage data: 1½" = 3ml



REPAIR KIT INCLUDES:

1. Ball
2. Body gasket
3. Thrust washer
4. Ball seats
5. Upper stem bushing
6. Stem o-ring

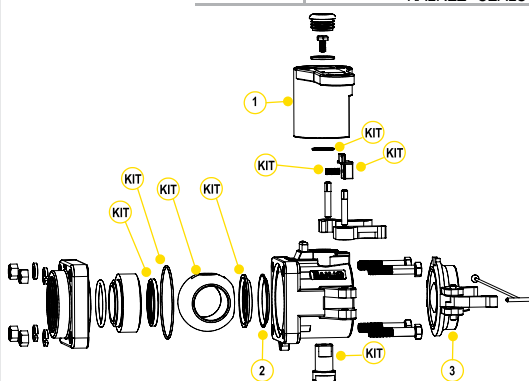


1½" POLY MALE DRY-MATE

PART NO	DESCRIPTION	MAX PSI	PIPE SIZE	OPENING THRU BALL	QTY
DM150A	1½" MALE X FPT NPT W/FKM SEALS	100	1½"	1½"	1
DM150AE	1½" MALE X FPT NPT W/EPDM SEALS	100	1½"	1½"	1
DM150AT	1½" MALE X FPT NPT W/ KALREZ® SEALS	100	1½"	1½"	1
DM150AB	1½" MALE X FPT BSP W/FKM SEALS	100	1½"	1½"	1
DM150ABE	1½" MALE X FPT BSP W/EPDM SEALS	100	1½"	1½"	1
DM150ABT	1½" MALE X FPT BSP W/ KALREZ® SEALS	100	1½"	1½"	1

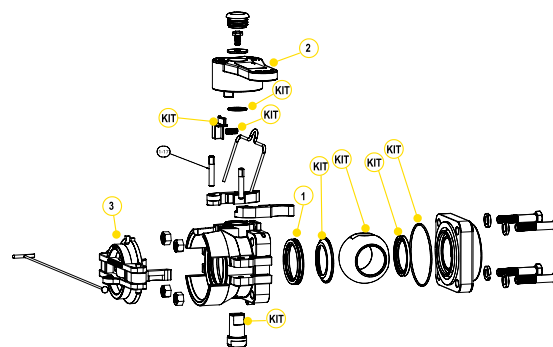
1½" POLY FEMALE DRY-MATE

PART NO	DESCRIPTION	MAX PSI	PIPE SIZE	OPENING THRU BALL	QTY
DM150D	1½" FEMALE X FPT NPT W/FKM SEALS	100	1½"	1½"	1
DM150DE	1½" FEMALE NPT W/EPDM SEALS	100	1½"	1½"	1
DM150DT	1½" FEMALE NPT W/KALREZ® SEALS	100	1½"	1½"	1
DM150DB	1½" FEMALE X FPT BSP W/FKM SEALS	100	1½"	1½"	1
DM150DBE	1½" FEMALE X FPT BSP W/EPDM SEALS	100	1½"	1½"	1
DM150DBT	1½" FEMALE X FPT BSP W/ KALREZ® SEALS	100	1½"	1½"	1



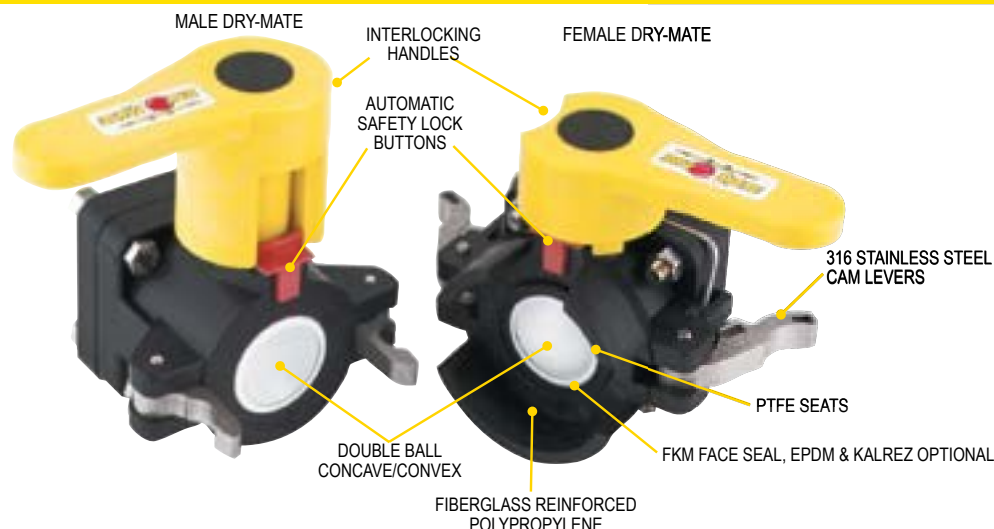
REPLACEMENT PARTS MALE

ITEM	PART NO	DESCRIPTION	QTY
1	DM20153M	MALE HANDLE	1
1	DB20153M	LOW PROFILE HANDLE	1
2	DB20290	FKM FACE SEAL	1
2	DM20295A	EPDM FACE SEAL	1
2	DM20296	KALREZ® FACE SEAL	1
3	DM200CAP	DUST CAP	1
KIT	DM20200A	REPAIR KIT FOR DM150A	1



REPLACEMENT PARTS FEMALE

ITEM	PART NO	DESCRIPTION	QTY
1	DM20294A	FKM FACE SEAL	1
1	DM20295A	EPDM FACE SEAL	1
1	DM20296	KALREZ® FACE SEAL	1
2	DM20153F	FEMALE HANDLE	1
3	DM200PL	DUST PLUG	1
KIT	DM20200D	REPAIR KIT FOR DM150D	1



2" POLY MALE DRY-MATE

PART NO	DESCRIPTION	MAX PSI	PIPE SIZE	OPENING THRU BALL	QTY
DM200A	2" MALE X FPT NPT W/FKM SEALS	100	2"	1½"	1
DM200AB	2" MALE X FPT BSP W/FKM SEALS	100	2"	1½"	1
DM200AE	2" MALE X FPT NPT W/EPDM SEALS	100	2"	1½"	1
DM200AT	2" MALE X FPT NPT W/ KALREZ® SEALS	100	2"	1½"	1
DMMT201A	2" MALE X MALE NPT W/LOW PROFILE HANDLE	100	2"	1½"	1
DMMT201AE	2" MALE X MALE NPT W/LOW PROFILE HANDLE W/EPDM SEALS	100	2"	1½"	1

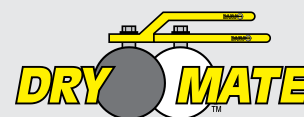
2" POLY FEMALE DRY-MATE

PART NO	DESCRIPTION	MAX PSI	PIPE SIZE	OPENING THRU BALL	QTY
DM200D	2" FEMALE X FPT NPT W/FKM SEALS	100	2"	1½"	1
DM200DB	2" FEMALE X FPT BSP W/FKM SEALS	100	2"	1½"	1
DM200DE	2" FEMALE W/EPDM SEALS	100	2"	1½"	1
DM200DT	2" FEMALE W/KALREZ® SEALS	100	2"	1½"	1

2" POLY DRY-MATES

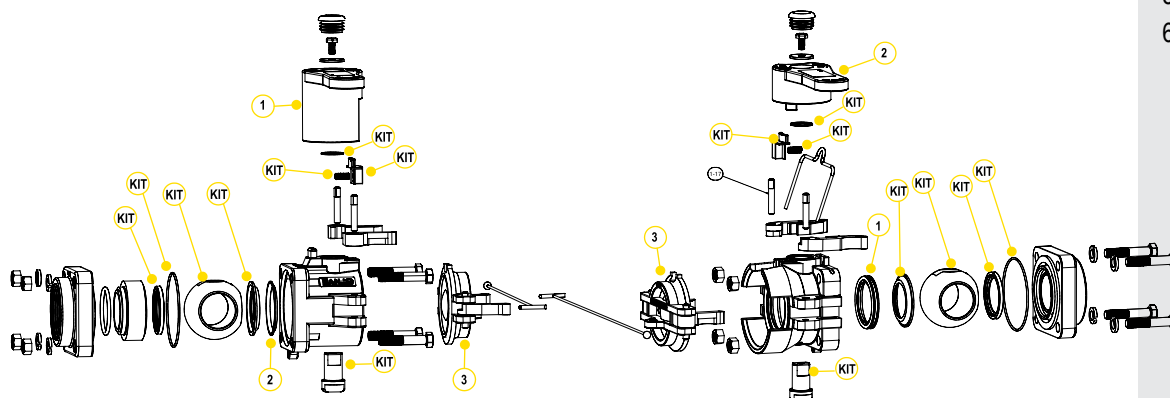
FEATURES

- Lightweight
- Easy to use
- Economical
- Reduces risk of exposure
- Wide range of chemical resistance
- Unrestricted 1½" flow
- Patented double ball design with cam lever connection
- When properly installed and operated, the assembly will not accidentally separate while fluid is flowing; preventing costly mishaps
- Spillage data: 2" = 4ml



REPAIR KIT INCLUDES:

1. Ball
2. Body gasket
3. Thrust washer
4. Ball seats
5. Upper stem bushing
6. Stem o-ring



REPLACEMENT PARTS MALE

ITEM	PART NO	DESCRIPTION	QTY
1	DM20153M	MALE HANDLE	1
1	DB20153M	LOW PROFILE HANDLE	1
2	DB20290	FKM FACE SEAL	1
2	DM20295A	EPDM FACE SEAL	1
2	DM20296	KALREZ® FACE SEAL	1
3	DM200CAP	DUST CAP	1
KIT	DM20200A	REPAIR KIT FOR DM200A	1

REPLACEMENT PARTS FEMALE

ITEM	PART NO	DESCRIPTION	QTY
1	DM20294A	FKM FACE SEAL	1
1	DM20295A	EPDM FACE SEAL	1
1	DM20296	KALREZ® FACE SEAL	1
2	DM20153F	FEMALE HANDLE	1
3	DM200PL	DUST PLUG	1
KIT	DM20200D	REPAIR KIT FOR DM200D	1

DRY-MATES

2" FULL PORT POLY DRY-MATES

FEATURES

- Lightweight
- Easy to use
- Economical
- Reduces risk of exposure
- Wide range of chemical resistance
- Unrestricted 2" flow
- Patented double ball design with cam lever connection
- When properly installed and operated, the assembly will not accidentally separate while fluid is flowing; preventing costly mishaps
- Spillage data: 2" = 2ml

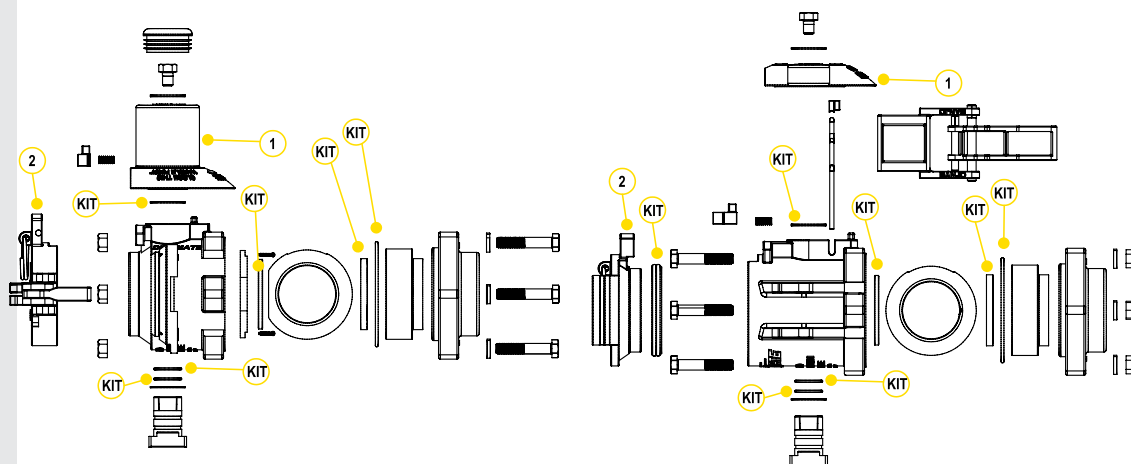


2" FULL PORT POLY DRY-MATES

PART NO	DESCRIPTION	MAX PSI	PIPE SIZE	OPENING THRU BALL	QTY
DM220D	2" FEMALE BSP X FPT NPT W/FKM SEALS	225	2"	2"	1
DM220DB	2" FEMALE X FPT NPT W/FKM SEALS	225	2"	2"	1
DM220A	2" MALE X FPT W/FKM SEALS	225	2"	2"	1
DM220AB	2" MALE BSP X FPT W/FKM SEALS	225	2"	2"	1

REPAIR KIT INCLUDES:

1. Body gasket
2. Thrust washer
3. Ball seats
4. Upper stem bushing
5. Stem o-ring
6. Face seal



REPLACEMENT PARTS MALE

ITEM	PART NO	DESCRIPTION	QTY
1	DM25153M	MALE HANDLE	1
2	DM220CAP	DUST CAP	1
KIT	DM25200	REPAIR KIT	1

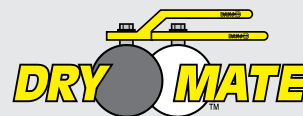
REPLACEMENT PARTS FEMALE

ITEM	PART NO	DESCRIPTION	QTY
1	DM25153F	FEMALE HANDLE	1
2	DM221PL	DUST PLUG	1
KIT	DM25200	REPAIR KIT	1

3" FULL PORT POLY DRY-MATES

FEATURES

- Lightweight
- Easy to use
- Economical
- Reduces risk of exposure
- Wide range of chemical resistance
- Unrestricted 3" flow
- Patented double ball design with cam lever connection
- When properly installed and operated, the assembly will not accidentally separate while fluid is flowing; preventing costly mishaps
- Spillage data: 3" = 15ml

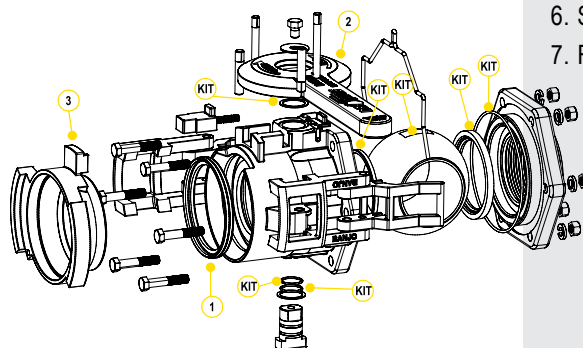
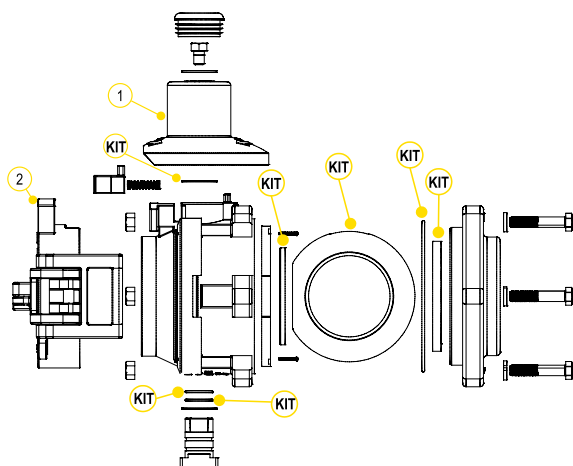


REPAIR KIT INCLUDES:

1. Ball
2. Body gasket
3. Thrust washer
4. Ball seats
5. Upper stem bushing
6. Stem o-ring
7. Face seal

3" FULL PORT POLY DRY-MATES

PART NO	DESCRIPTION	MAX PSI	PIPE SIZE	OPENING THRU BALL	QTY
DM300AFP	3" FP MALE X 3" FEMALE NPT THREADS W/ FKM SEALS	150	3"	3"	1
DM300ABFP	3" FP MALE X 3" BSP THREADS W/ FKM SEALS	150	3"	3"	1
DM300DFP	3" FP FEMALE X 3" FEMALE NPT THREADS W/ FKM SEALS	150	3"	3"	1
DM300DBFP	3" FP FEMALE X 3" BSP THREADS W/ FKM SEALS	150	3"	3"	1



REPLACEMENT PARTS MALE

ITEM	PART NO	DESCRIPTION	QTY
1	DM35153M	MALE HANDLE	1
2	DM300CAP	DUST CAP	1
KIT	DM35200	REPAIR KIT	1

REPLACEMENT PARTS FEMALE

ITEM	PART NO	DESCRIPTION	QTY
1	DM35294	FACE SEAL FKM	1
2	DM35153F	FEMALE HANDLE	1
3	DM300PL	DUST PLUG	1
KIT	DM35200	REPAIR KIT	1

DRY-MATES

1" FULL PORT STAINLESS STEEL DRY-MATES

FEATURES

- 316 stainless steel construction
- Unrestricted 1" flow
- Patented double ball design with cam lever connection
- 300°F maximum operating temperature
- 100% PTFE ball seats
- When properly installed and operated, the assembly will not accidentally separate while fluid is flowing; preventing costly mishaps
- Spillage data: 1" = 1ml

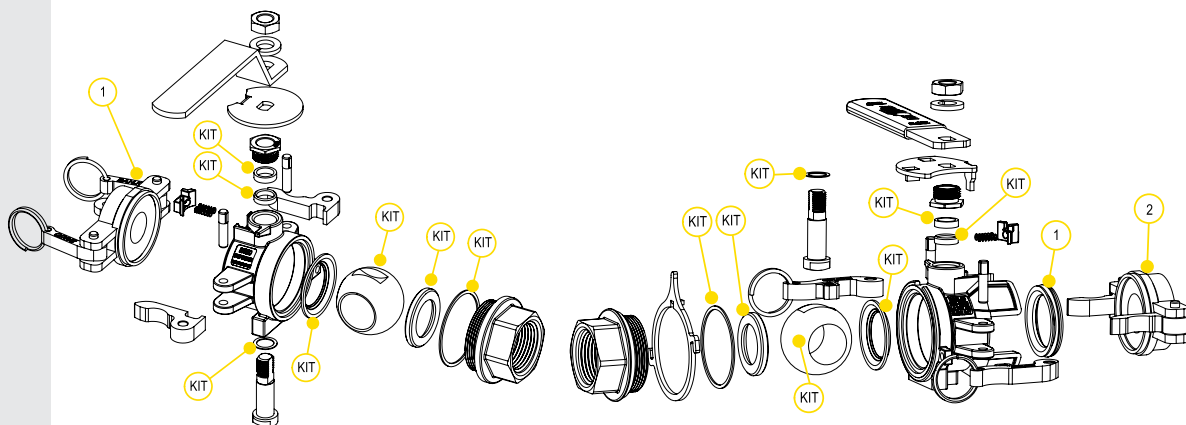


1" FULL PORT STAINLESS STEEL DRY-MATE

PART NO	DESCRIPTION	MAX PSI	PIPE SIZE	OPENING THRU BALL	QTY
DM100ASS	1" MALE X FPT NPT W/ PTFE SEALS	150	1"	1"	1
DM100ABSS	1" MALE X FPT BSP W/ PTFE SEALS	150	1"	1"	1
DM100DSS	1" FEMALE X FPT NPT W/ FKM SEALS	150	1"	1"	1
DM100DSSE	1" FEMALE X FPT NPT W/ EPDM SEALS	150	1"	1"	1
DM100DSST	1" FEMALE X FPT NPT W/ KALREZ®SEALS	150	1"	1"	1
DM100DBSS	1" FEMALE X FPT BSP W/ FKM SEALS	150	1"	1"	1
DM100DBSSE	1" FEMALE X FPT BSP W/ EPDM SEALS	150	1"	1"	1
DM100DBSST	1" FEMALE X FPT BSP W/ KALREZ®SEALS	150	1"	1"	1

REPAIR KIT INCLUDES:

1. Ball
2. Body gasket
3. Thrust washer
4. Ball seats
5. Upper stem bushing
6. Stem o-ring
7. Face seal



REPLACEMENT PARTS MALE

ITEM	PART NO	DESCRIPTION	QTY
1	DM100CAP	DUST CAP	1
KIT	DM101SS	REPAIR KIT	1

REPLACEMENT PARTS FEMALE

ITEM	PART NO	DESCRIPTION	QTY
1	DM10294A	FKM FACE SEAL	1
1	DM10295A	EPDM FACE SEAL	1
1	DM10296	KALREZ® FACE SEAL	1
2	DM100PL	POLY PLUG	1
KIT	DM102SSV	FKM REPAIR KIT	1
KIT	DM102SSE	EPDM REPAIR KIT	1
KIT	DM102SST	KALREZ® REPAIR KIT	1



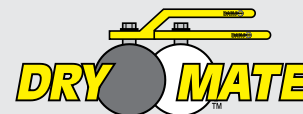
1 1/2" FULL PORT STAINLESS STEEL DRY-MATES

FEATURES

- 316 stainless steel construction
- Unrestricted 1 1/2" flow
- Patented double ball design with cam lever connection
- 300°F maximum operating temperature
- 100% PTFE ball seats
- When properly installed and operated, the assembly will not accidentally separate while fluid is flowing; preventing costly mishaps
- Spillage data: 1 1/2" = 2ml

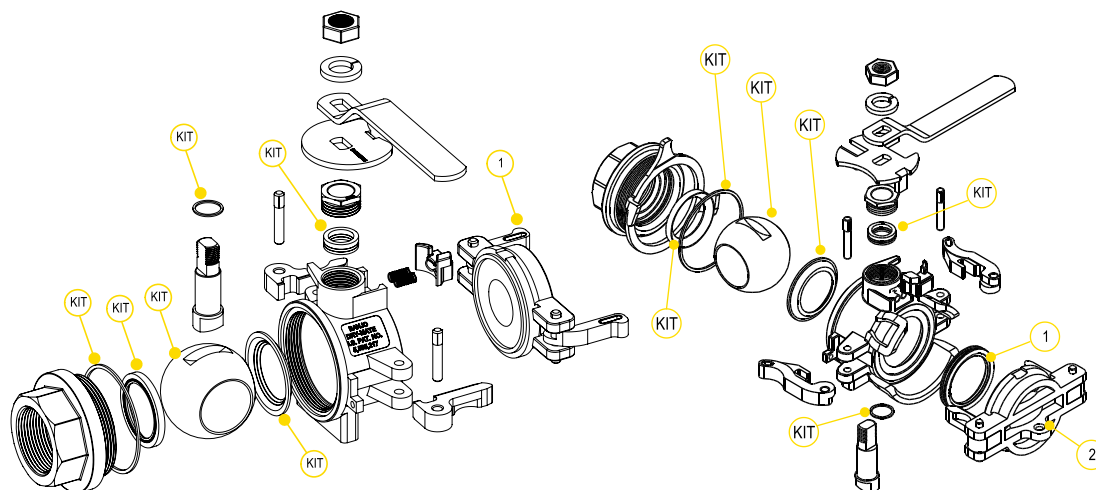
1 1/2" FULL PORT STAINLESS STEEL DRY-MATE

PART NO	DESCRIPTION	MAX PSI	PIPE SIZE	OPENING THRU BALL	QTY
DM150ASS	1 1/2" MALE X FPT NPT W/ PTFE SEALS	150	1 1/2"	1 1/2"	1
DM150ABSS	1 1/2" MALE X FPT BSP W/ PTFE SEALS	150	1 1/2"	1 1/2"	1
DM150DSS	1 1/2" FEMALE X FPT NPT W/ FKM SEALS	150	1 1/2"	1 1/2"	1
DM150DSSE	1 1/2" FEMALE X FPT NPT W/ EPDM SEALS	150	1 1/2"	1 1/2"	1
DM150DSST	1 1/2" FEMALE X FPT NPT W/ KALREZ® SEALS	150	1 1/2"	1 1/2"	1
DM150DBSS	1 1/2" FEMALE X FPT BSP W/ FKM SEALS	150	1 1/2"	1 1/2"	1
DM150DBSSE	1 1/2" FEMALE X FPT BSP W/ EPDM SEALS	150	1 1/2"	1 1/2"	1



REPAIR KIT INCLUDES:

1. Ball
2. Body gasket
3. Thrust washer
4. Ball seats
5. Upper stem bushing
6. Stem o-ring
7. Face seal



REPLACEMENT PARTS MALE

ITEM	PART NO	DESCRIPTION	QTY
1	DM200ACAP	DUST CAP	1
KIT	DM201SS	REPAIR KIT	1

REPLACEMENT PARTS FEMALE

ITEM	PART NO	DESCRIPTION	QTY
1	DM20294A	FKM FACE SEAL	1
1	DM20295A	EPDM FACE SEAL	1
1	DM20296	KALREZ® FACE SEAL	1
2	DM200APL	DUST PLUG	1
KIT	DM202SSV	FKM REPAIR KIT	1
KIT	DM202SSE	EPDM REPAIR KIT	1
KIT	DM202SST	KALREZ® REPAIR KIT	1

DRY-MATES

2" STAINLESS STEEL DRY-MATES

FEATURES

- 316 stainless steel construction
- Patented double ball design with cam lever connection
- 300°F maximum operating temperature
- 100% PTFE ball seats
- When properly installed and operated, the assembly will not accidentally separate while fluid is flowing; preventing costly mishaps
- Spillage data: 2" = 2ml

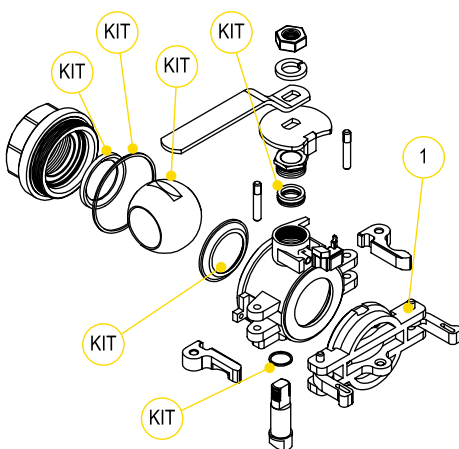


2" STANDARD PORT STAINLESS STEEL DRY-MATE

PART NO	DESCRIPTION	MAX PSI	PIPE SIZE	OPENING THRU BALL	QTY
DM200ASS	2" MALE X FPT NPT W/ PTFE SEALS	300	2"	1½"	1
DM200ABSS	2" MALE X FPT BSP W/ PTFE SEALS	150	2"	1½"	1
DM200DSS	2" FEMALE X FPT NPT W/ FKM SEALS	300	2"	1½"	1
DM200DSSE	2" FEMALE X FPT NPT W/ EPDM SEALS	150	2"	1½"	1
DM200DSST	2" FEMALE X FPT NPT W/ KALREZ® SEALS	150	2"	1½"	1
DM200DBSS	2" FEMALE X FPT BSP W/ FKM SEALS	150	2"	1½"	1
DM200DBSSE	2" FEMALE X FPT BSP W/ EPDM SEALS	150	2"	1½"	1
DM200DBSST	2" FEMALE X FPT BSP W/ KALREZ® SEALS	150	2"	1½"	1

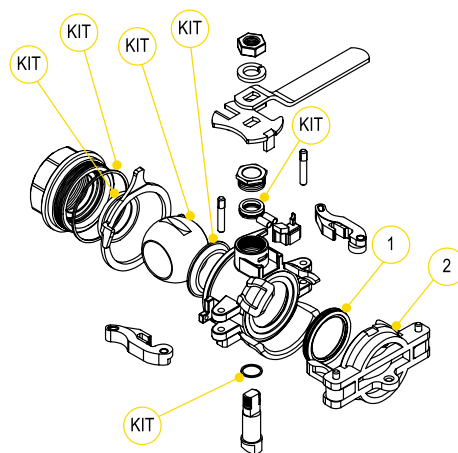
REPAIR KIT INCLUDES:

1. Ball
2. Body gasket
3. Thrust washer
4. Ball seats
5. Upper stem bushing
6. Stem o-ring
7. Face seal



REPLACEMENT PARTS MALE

ITEM	PART NO	DESCRIPTION	QTY
1	DM200ACAP	DUST CAP	1
KIT	DM201SS	REPAIR KIT	1



REPLACEMENT PARTS FEMALE

ITEM	PART NO	DESCRIPTION	QTY
1	DM20294A	FKM FACE SEAL	1
1	DM20295A	EPDM FACE SEAL	1
1	DM20296	KALREZ® FACE SEAL	1
2	DM200APL	POLY PLUG	1
KIT	DM202SSV	FKM REPAIR KIT	1
KIT	DM202SSE	EPDM REPAIR KIT	1
KIT	DM202SST	KALREZ® REPAIR KIT	1

2" FULL PORT STAINLESS STEEL DRY-MATES

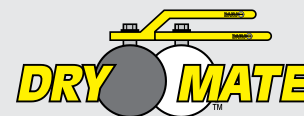
FEATURES

- 316 stainless steel construction
- Unrestricted 2" flow
- Patented double ball design with cam lever connection
- 300°F maximum operating temperature
- 100% PTFE ball seats
- When properly installed and operated, the assembly will not accidentally separate while fluid is flowing; preventing costly mishaps
- Spillage data: 2" FP = 2.5ml



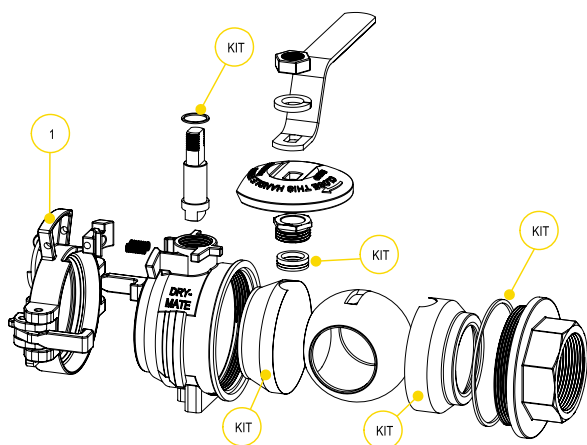
2" FULL PORT STAINLESS STEEL DRY-MATE

PART NO	DESCRIPTION	MAX PSI	PIPE SIZE	OPENING THRU BALL	QTY
DM220ASS	2" FULL PORT MALE X FPT NPT W/ PTFE SEALS	300	2"	2"	1
DM220ABSS	2" FULL PORT MALE X FPT BSP W/ PTFE SEALS	300	2"	2"	1
DM220DSS	2" FULL PORT FEMALE X FPT NPT W/ FKM SEALS	300	2"	2"	1
DM220DSSE	2" FULL PORT FEMALE X FPT NPT W/ EPDM SEALS	300	2"	2"	1
DM220DSST	2" FULL PORT FEMALE X FPT NPT W/ KALREZ® SEALS	300	2"	2"	1
DM220DBSS	2" FULL PORT FEMALE X FPT BSP W/ FKM SEALS	300	2"	2"	1



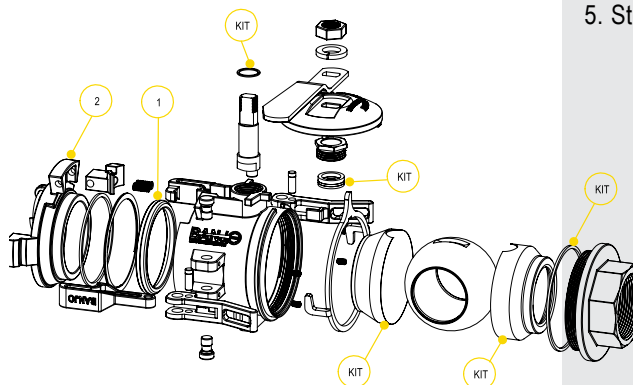
REPAIR KIT INCLUDES:

1. Body gasket
2. Thrust washer
3. Ball seats
4. Upper stem bushing
5. Stem o-ring



REPLACEMENT PARTS MALE

ITEM	PART NO	DESCRIPTION	QTY
1	DM220CAP	DUST CAP	1
KIT	DM221SS	REPAIR KIT	1



REPLACEMENT PARTS FEMALE

ITEM	PART NO	DESCRIPTION	QTY
1	DM25294	FKM FACE SEAL	1
1	DM25294E	EPDM FACE SEAL	1
1	DM25294T	KALREZ® FACE SEAL	1
2	DM220PL	DUST PLUG	1
KIT	DM222SS	REPAIR KIT	1

DRY-MATES

CLOSED TRANSFER SYSTEM ADAPTERS

FEATURES

- Allows to safely and properly flush chemical containers



CLOSED TRANSFER SYSTEM ADAPTERS

PART NO	DESCRIPTION	MAX PSI	PIPE SIZE	QTY
CTS200AR	CLOSED MIX BOTTLE ADAPTER	40	63 MM BTL	1
CTS200D	TANK ADAPTER W/2" MALE NPT THREADS	40	2"	1